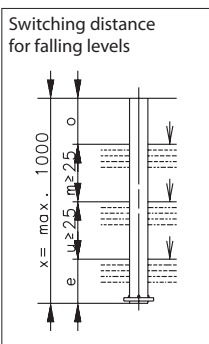


Miniature float switches

Ordering example:
See Page 118

Position	1	2	3
Version	Miniature float switches	Float	
Type	MS		—

Min. / max. dimensions



Float



<p>PP ø 25 x 21</p> <p>e = 20 (NC contact) e = 17 (NO contact)</p>	<p>PVC ø 25 x 21</p> <p>e = 26 (NC contact) e = 23 (NO contact)</p>	<p>NBR ø 20 x 20</p> <p>e = 23 (NC contact) e = 23 (NO contact)</p>	<p>NBR ø 23 x 25</p> <p>e = 28 (NC contact) e = 22 (NO contact)</p>	<p>1.4571 ø 30</p> <p>e = 24 (NC contact) e = 23 (NO contact)</p>
--	---	---	---	---

Connection thread
R1/8"



K1	K2	K3	K4	N1
K1	K2	K3	K4	N1
K1	—	K3	K4	—
—	K2	K3	K4	—

Connection thread
R3/8"



K1	K2	K3	K4	N1
K1	K2	K3	K4	N1
K1	—	K3	K4	—
—	K2	K3	K4	—

Connection thread
R3/8" with connector



K1	K2	K3	K4	N1
K1	K2	K3	K4	N1
K1	—	K3	K4	—
—	K2	K3	K4	—

4	5	6	7	8	9	10
Enclosure material		Connection head		Switching function		Special features (see Page 119)
	—		—			

Enclosure material



Connection head



Switching function



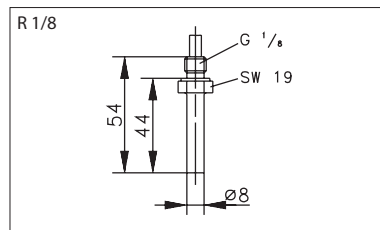
Ni (stainless) = 1.4571
MS (brass) = MS63
PP = Polypropylene
PVC = Polyvinyl chloride

Version

S = NO contact (250 V– 0.5 A– 10 VA)
max. = 10 VA
O = NC contact (100 V; 0.3 A; 3 VA)
U = Changeover contact
(100 V; 0.3 A; 3 VA)

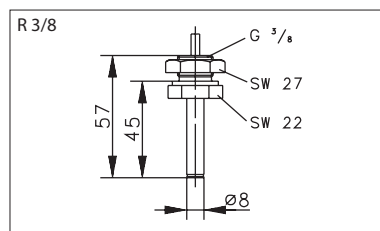
X = max. overall length (mm)
Max. number of switching points
Cable length (m)

Ni
MS
PP
PVC



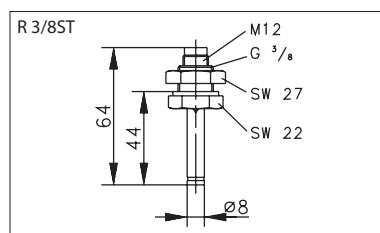
S	O	U	1000	3	1
S	O	U	1000	3	1
S	O	U	40,5	1	1
S	O	U	500	3	1

Ni
MS
PP
PVC



S	O	U	1000	3	1
S	O	U	1000	3	1
S	O	U	40,5	1	1
S	O	U	500	3	1

Ni
MS
PP
PVC



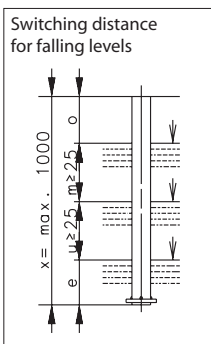
S	O	U	1000	3	—
S	O	U	1000	3	—
PP			40,5	1	—
PVC			500	3	—

Miniature float switches

Ordering example:
See Page 118

Position	1	2	3
Version	Miniature float switches	Float	
Type	MS		—

Min. / max. dimensions



Float



<p>PP ø 25 x 21</p> <p>e = 20 (NC contact) e = 17 (NO contact)</p>	<p>PVC ø 25 x 21</p> <p>e = 26 (NC contact) e = 23 (NO contact)</p>	<p>NBR ø 20 x 20</p> <p>e = 23 (NC contact) e = 23 (NO contact)</p>	<p>NBR ø 23 x 25</p> <p>e = 28 (NC contact) e = 22 (NO contact)</p>	<p>1.4571 ø 30</p> <p>e = 24 (NC contact) e = 23 (NO contact)</p>
--	---	---	---	---

Connection thread PG7



K1	K2	K3	K4	N1
K1	K2	K3	K4	N1
K1	—	K3	K4	—
—	K2	K3	K4	—

MSKS-PA-FL36-05



—	—	—	—	—
---	---	---	---	---

4	5	6	7	8	9	10
Enclosure material		Connection head		Switching function		Special features (see Page 119)
	—		—			

Enclosure material



Connection head



Switching function



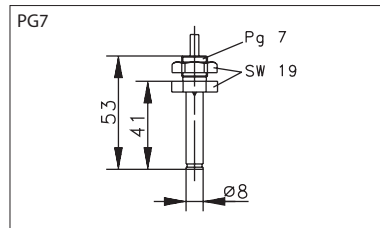
Ni (stainless) = 1.4571
MS (brass) = MS63
PP = Polypropylene
PVC = Polyvinyl chloride

Version

S = NO contact (250 V– 0.5 A– 10 VA)
max. = 10 VA
O = NC contact (100 V; 0.3 A; 3 VA)
U = Changeover contact
(100 V; 0.3 A; 3 VA)

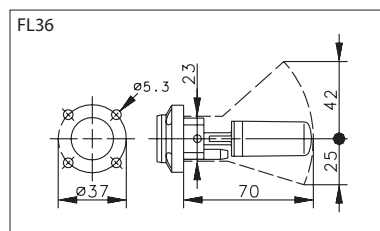
X = max. overall length (mm)
Max. number of switching points
Cable length (m)

Ni
MS
PP
PVC



S	O	U	1000	3	1
			45 (fixed length)	1	
S	O	U	40,5	1	1
S	O	U	500	3	1

PA12
(Enclosure & float)



S O —
(with 1 m cable)

For lateral mounting